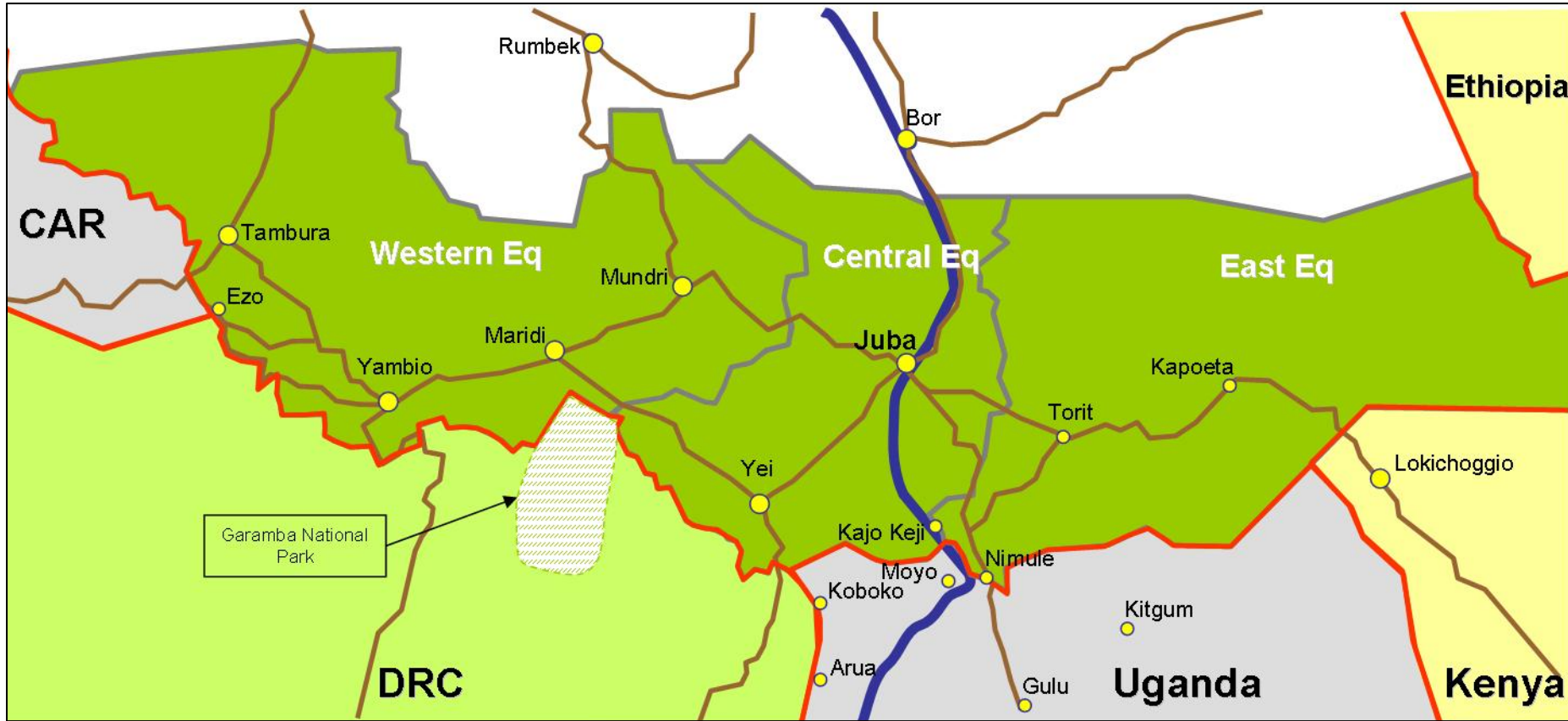


Security Alert: South Sudan – Uganda



This information is provided for the benefit of the humanitarian community and is a result of research conducted by Safer Access. The circumstances and recommendations indicated by this report may change.

All readers are therefore advised to act safely, according to their own capacity and with the latest information

Identified threats

saferaccess

Lord's Resistance Army

The Lord's Resistance Army (LRA) was formed in 1987 and is led by Joseph Kony. It is a paramilitary group operating mainly in northern Uganda and parts of South Sudan.

The LRA is accused of widespread human rights violations, and has been indicted by the International Criminal Court for sexual enslavement, rape, attacks against the civilian population, pillaging and the enlistment of children. Over 2 million people have been made homeless by conflict involving the LRA.

Since the signature of the CPA between South Sudanese government representatives and the government in Khartoum, the LRA has gone into hiding, occupying parts of Garamba National Park in the DRC.

The LRA signed a truce in August 2006, which was then renewed in December 2006. Talks between the Ugandan Government and the LRA were held at Juba under the auspices of the government of South Sudan.

Following recent statement made by Sudanese President Omar Hassan al-Bashir which threatened to evict the LRA from Sudan, the LRA have refused to return to Juba and allegedly left designated assembly areas (Owiny-Ki-Bul, and Ri-Kwangba).



Photo: Reuters/Reuters TV

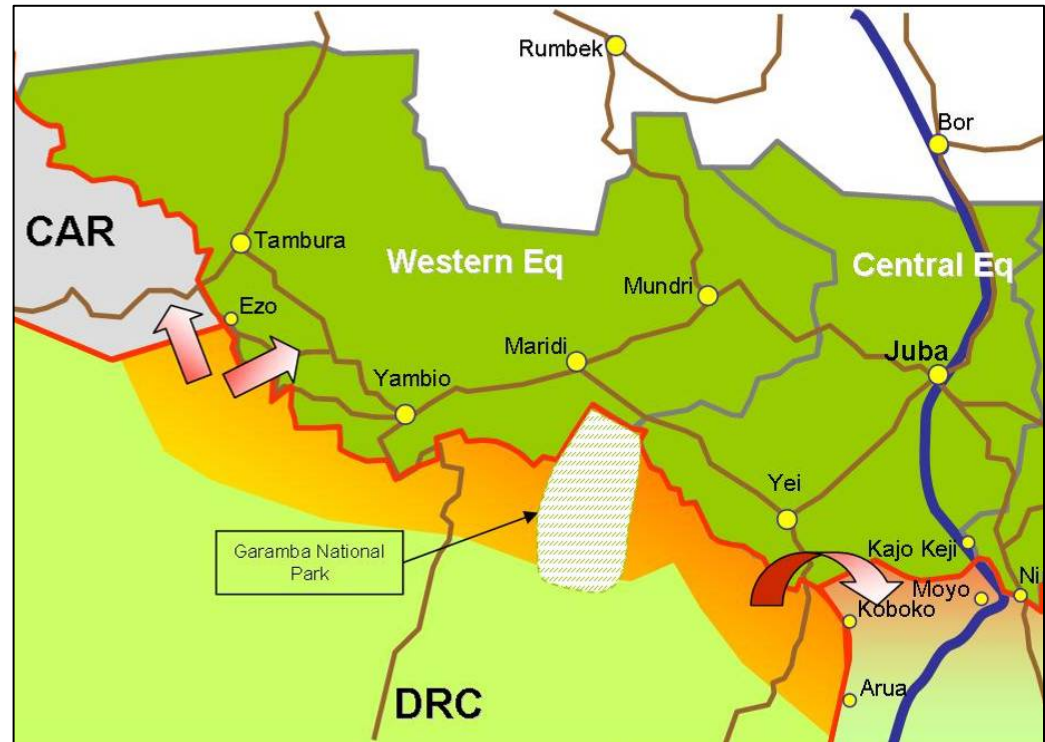
This information is provided for the benefit of the humanitarian community and is a result of research conducted by Safer Access. The circumstances and recommendations indicated by this report may change.

All readers are therefore advised to act safely, according to their own capacity and with the latest information

On February 21st 2007, the LRA released a statement where they insisted that discussions would not resume until a new venue was agreed.

Some sources suggest that the LRA, fearing operations by the UPDF and the Sudanese Government, might be moving to the Central African Republic (CAR).

Recent reports of incidents in Ezo and Tambura area seem to confirm the reappearance of the group in Western Equatoria State. Local authorities have increased their forces at Yambio in the event LRA plans to attack the town.



This information is provided for the benefit of the humanitarian community and is a result of research conducted by Safer Access. The circumstances and recommendations indicated by this report may change.

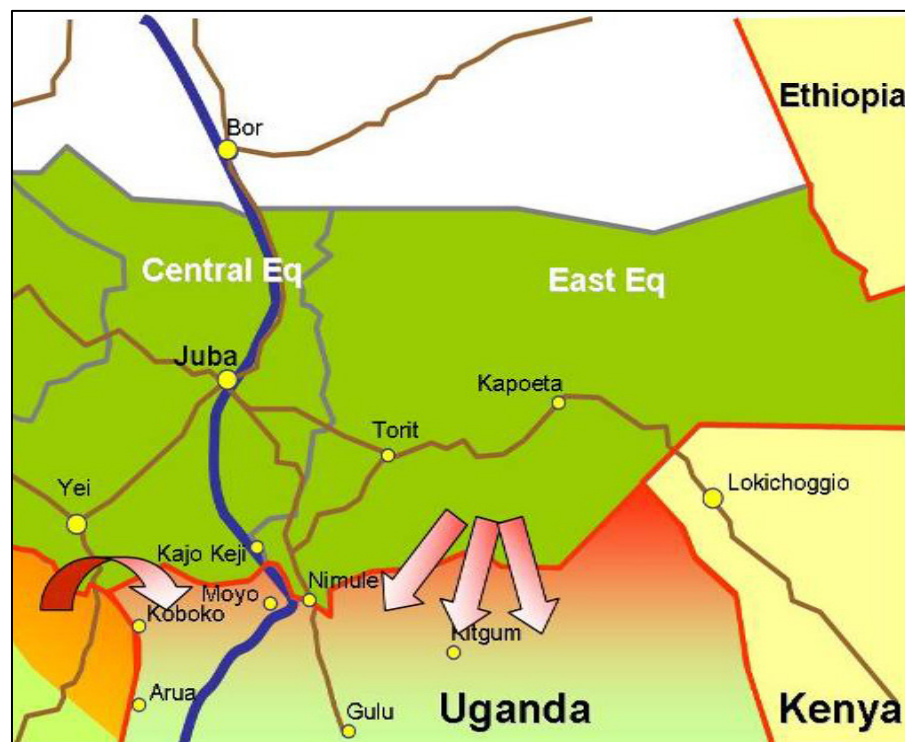
All readers are therefore advised to act safely, according to their own capacity and with the latest information

Sightings and incidents related to the LRA have also increased in the recent weeks on the Ugandan side. LRA sighting/activity has mainly been noticed in Kitgum, Gulu, Amuru and Pader.

In addition to the LRA threat, tribal tensions should not be underestimated in the region.

The Karamojong clan is particularly active in the north-eastern part of Uganda. The Karamojong are an Eastern Ugandan tribe of predominantly cattle men who are in constant conflict with their neighbours in Uganda, Sudan and Kenya due to frequent cattle raids.

On the Sudanese side, the most significant Tribal related incidents have been between the Azande (a major farming tribe) and the Dinkhas (cattle herders).



This information is provided for the benefit of the humanitarian community and is a result of research conducted by Safer Access. The circumstances and recommendations indicated by this report may change.

All readers are therefore advised to act safely, according to their own capacity and with the latest information

Analysis/Recommendations

saferaccess

- ✓ **Situation at the South Sudan, Uganda and DRC borders remains unpredictable. Recent LRA withdrawal from the negotiation table increases the likelihood of seeing acts of looting and other violence perpetrated by the LRA.**
- ✓ **Although other groups might also take advantage of the situation to conduct similar acts, the LRA will most likely be held responsible. In this context, humanitarian actors remain both the richest and softest target.**
- ✓ *Actors with permanent presence/operations in areas influenced by the LRA are therefore advised to remain vigilant and regularly update their safety protocols. The best security measure you can take is to keep yourself well informed. Keep your national staff properly briefed, and encourage them to aid in ongoing contextual analysis.*
- ✓ *Other awareness measure that should be implemented is the monitoring of local media and especially local radio stations, as the LRA have used them in the past to release press statements.*
- ✓ *Humanitarian actors are also strongly encouraged to share information amongst themselves and regularly assess the situation both individually and collectively.*
- ✓ *The following slides include some aspects that should be considered/reviewed before the situation deteriorates.*

This information is provided for the benefit of the humanitarian community and is a result of research conducted by Safer Access. The circumstances and recommendations indicated by this report may change.

All readers are therefore advised to act safely, according to their own capacity and with the latest information

Hibernation kits



saferaccess

Below is an example of a hibernation kit that should be available at each site where staff may be expected to hibernate. The quantities suggested below are for an expected hibernation of three days.

FOOD ITEMS (If necessary, purchase the containers separately)	
Biscuits	1 Pack/person
Salty Biscuits	1 Pack/person
Tea bags in metal container	1 bag/person/day
Coffee in glass container	1 Piece
Water drinking plastic bottle	3 litres /person/day
Rice in sealed container	0.5Kg/person/day
Pasta – Macaroni	0.5Kg/person/day
Tomato concentrate	0.25kg/person/day
Tuna	0.1kg/person/day

FOOD ITEMS (If necessary, purchase the containers separately)	
Red Beans can	0.1kg/person/day
Green beans can	0.1kg/person/day
Sweet corn can	0.1kg/person/day
Fruit can	0.1kg/person/day
Cooking oil in plastic container	0.5L/person
Salt	0.1/person/day
Pepper	
Sugar in metal container	0.1kg/person/day
Dehydrated juice	1 sachet/person/day

Water purification tablets have voluntarily not been included in this kits as they should already be part of quick run bags and first aid kits deployed at each site.

This information is provided for the benefit of the humanitarian community and is a result of research conducted by Safer Access. The circumstances and recommendations indicated by this report may change.

All readers are therefore advised to act safely, according to their own capacity and with the latest information

Hibernation kits

saferaccess

NON FOOD	
Flash Light	1 /person
Batteries for flashlight	1 Set/person
Match box –units	2 Box/person
Candles – units	4 /person
Kerosene lamp	0.5 /person
Kerosene stove	0.25/person
Mosquito insecticide (100ml)	1 /person
Liquid soap	0.1L/person/day
Soap – Hand	1 Bar/person
Toilet paper – Rolls	1Roll/person/day
Washing powder	250 g /person
Note pad	1 /person
Pens	1 /person

NON FOOD	
Water – sanitary use	20 litre Jerrycan
Kerosene	20 litre Jerrycan
Radio	1 Piece
Radio Batteries	1Set
Sharp Knife	0.25/person
Plastic cutlery (12 person kits)	1 pack/person
Plastic plates	2/person/day
Cooking set	1 set
Cord	1
Tape	1
Metal box w/ pad lock (1 food, 1 non food)	2

This information is provided for the benefit of the humanitarian community and is a result of research conducted by Safer Access. The circumstances and recommendations indicated by this report may change.

All readers are therefore advised to act safely, according to their own capacity and with the latest information

Vehicle equipment

saferaccess

- ✓ Two spare wheels (one is not sufficient in difficult or dangerous areas)
- ✓ Jerrycan of water (20 litres)
- ✓ Jerrycan of spare fuel (20 litres)
- ✓ Jack, wheel brace and any other tools for changing a wheel
- ✓ Tow-rope
- ✓ First aid kit (a large first aid kit (suitcase-size) may be necessary in some areas)
- ✓ Spare light bulbs
- ✓ Torch/flashlight and spare batteries
- ✓ Spare engine oil
- ✓ Sand plates/sandbags
- ✓ VHF radio
- ✓ HF radio
- ✓ Communication information: contact lists, frequencies etc
- ✓ Winch
- ✓ Front nudge bar
- ✓ Snorkel
- ✓ Fire extinguisher
- ✓ Shovel(s)

- ✓ Locking wheel nuts
- ✓ Spanners
- ✓ Screwdriver
- ✓ Spare fuses
- ✓ Map
- ✓ Compass
- ✓ Warning triangle
- ✓ Identifying markings or flag
- ✓ Vehicle documents including: ownership documents, authorisation documents and insurance certificate
- ✓ Vehicle logbook (for recording journeys made): to include columns for date, start location, time of departure, kilometre reading at departure, destination, time of arrival, kilometre reading at destination, purpose of trip, name of driver, signature
- ✓ Vehicle manual
- ✓ Blankets
- ✓ Food (if travelling on long journeys, or if delays are possible)

This information is provided for the benefit of the humanitarian community and is a result of research conducted by Safer Access. The circumstances and recommendations indicated by this report may change.

All readers are therefore advised to act safely, according to their own capacity and with the latest information

Quick run bag content

saferaccess

Mandatory:

Technical Equipment

- ✓ Satphone
- ✓ GPS & Compass
- ✓ VHF handset, batteries and charger
- ✓ Torch (+ batteries)

Documents

- ✓ Passport
- ✓ Money - Dollars (\$100-200) - in small denominations - and currency of host and asylum country
- ✓ Insurance documents
- ✓ Medical rescue card
- ✓ Agency contact list (international) and personal address book
- ✓ Writing material
- ✓ Driving licence

Food and drink

- ✓ 3litres of water (Minimum!)
- ✓ Survival rations
- ✓ Chocolate or high-energy food bars
- ✓ High-energy drinks (if available)

If possible also carry:

- ✓ Laptop computer
- ✓ Short Wave radio receiver (for news services)

Clothing

- ✓ At least one complete change of clothing
- ✓ Underwear and socks
- ✓ Towel (small size)
- ✓ Poncho liner
- ✓ Sun hat / sun glasses

Medicines & toiletries

- ✓ Mosquito repellent
- ✓ Anti malarial drugs
- ✓ Emergency anti-diarrhoeal drugs (Immodium etc)
- ✓ Oral re-hydration salts
- ✓ First aid kit c/w sterile needles
- ✓ Water purification tablet
- ✓ Toilet paper

As necessary:

- ✓ Glasses/contact lenses
- ✓ Contact lens cleaning fluid
- ✓ Female hygiene products
- ✓ Personal prescription medicines

This information is provided for the benefit of the humanitarian community and is a result of research conducted by Safer Access. The circumstances and recommendations indicated by this report may change.

All readers are therefore advised to act safely, according to their own capacity and with the latest information

The logo for Safer Access, featuring the word "saferaccess" in white lowercase letters on a green rounded rectangular background. A faint world map is visible behind the text.

Safer Access is a network of humanitarian safety expertise formed to better enable the provision of humanitarian and development aid. It is our overall objective to improve the capacity of relief and development organisations working in insecure and complicated environments to deliver life-saving assistance to those most in need.

Our work is first and foremost beneficiary-focused, innovative and aims to have an impact across the aid sector. Our belief is that the best way to ensure continued access to beneficiaries in even the most complex and fluid situations is for organizations to institutionalize effective security planning and procedures from the outset. Our intent is always to teach and facilitate best practises – practices which both safeguard staff security while also enabling access to those most in need. Our passion is to help enable safer and more effective operating practices, from those employed in management to those used by the teams in the field

We understand and are experienced in the challenges that aid workers, both national and international, face everyday. Safer Access is a platform for the collection and distribution of expertise and information to those that need it most. To that end, we are committed to the free and open sharing of critical information – including analysis and best practices – amongst humanitarian and development organisations so as to enable them to better manage their operating risks.

This information is provided for the benefit of the humanitarian community and is a result of research conducted by Safer Access. The circumstances and recommendations indicated by this report may change.

Should you have any questions regarding this report, or about what Safer Access can do to help you achieve your goals in difficult operating environments, contact us at enquiries@saferaccess.org or visit our website at www.saferaccess.org.

This information is provided for the benefit of the humanitarian community and is a result of research conducted by Safer Access. The circumstances and recommendations indicated by this report may change.

All readers are therefore advised to act safely, according to their own capacity and with the latest information